



WIN*
RM1,000!

Join our photo contest now!
*T&C Apply More info: suzuka.com.my/promotion

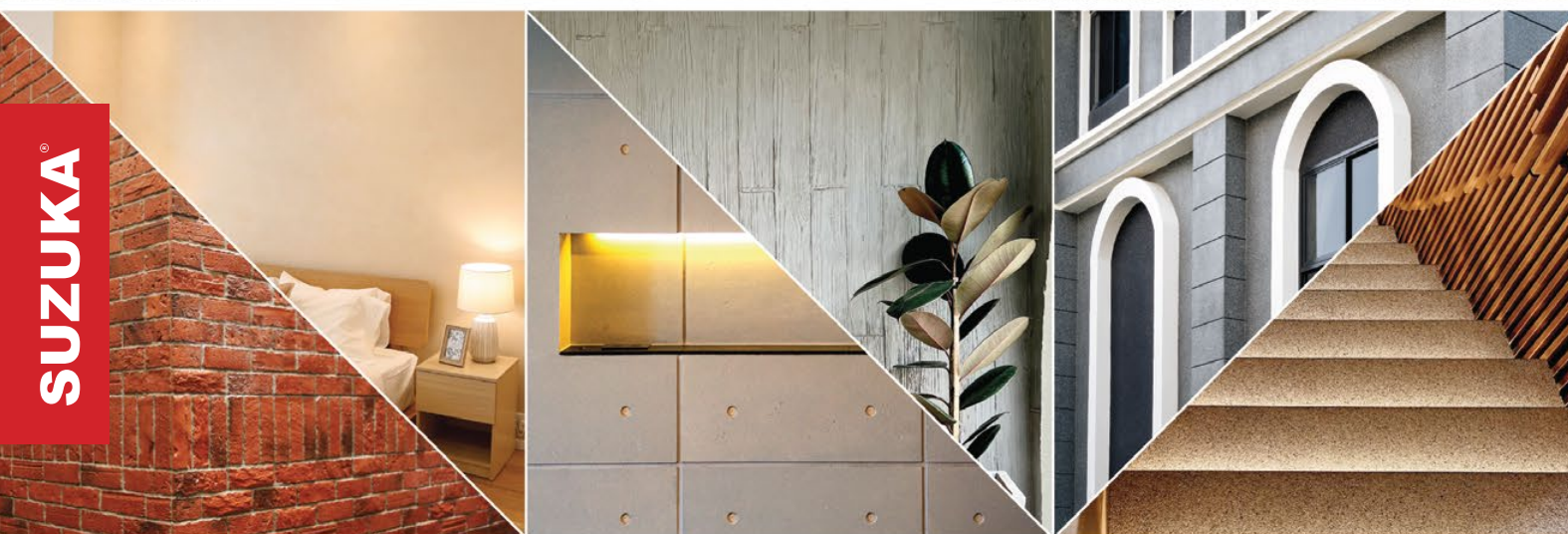


Strato.®

INTERIOR TEXTURED PAINT COLLECTION

WALL FINISH PROFESSIONALS

TAIWAN • MALAYSIA • THAILAND



BRICK & STONE VENEER • TEXTURED PAINT • KASTPANEL • ECES • TEXTURE COATING • PEBBLE STONE COATING



suzuka.com.my

  **suzuka.group** | **Hotline : +6012-258 7388**

* Photos of the products shown in this catalogue may vary in color due to lighting condition & printing. We suggest you examine actual product samples before ordering.



STRATO-E6.1-2305



EDITION
6.1

Strato® cashmere

Strato® Cashmere embodies the pinnacle of elegance in textured coating. Achieved through smooth layering and delicate craftsmanship, the finished product gives a refined and royal appearance with a lingering hint of sophistication.

• INTERIOR USE ONLY

Sandy &
Slight
Metallic
FINISHING

Features

Low VOC & Odor



Formaldehyde & Lead Free



Green Choice, Water Based & Eco-friendly



Easy, Quick Application & DIY Friendly



Easy Maintenance





SCH-003

SILVER
SLATE



SCH-016

STARDUST
SILVER

Interior Design by
METRICS®
GLOBAL



SCH-008

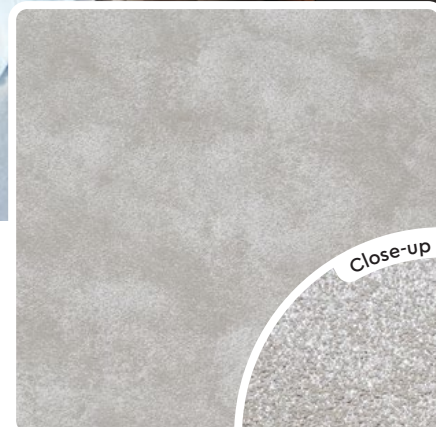
EGGSHELL
BEIGE



Pearl White | **SCH-001**



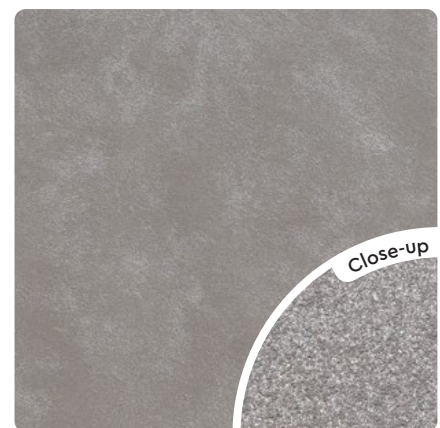
Silver Mist | **SCH-002**



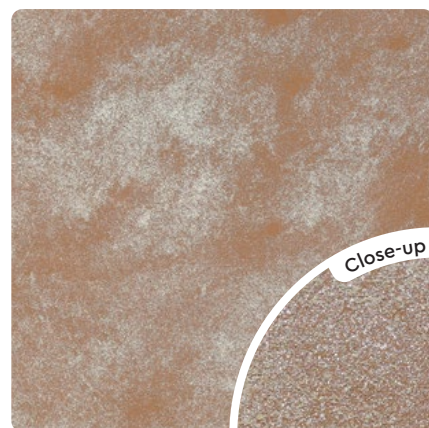
Silver Slate | **SCH-003**



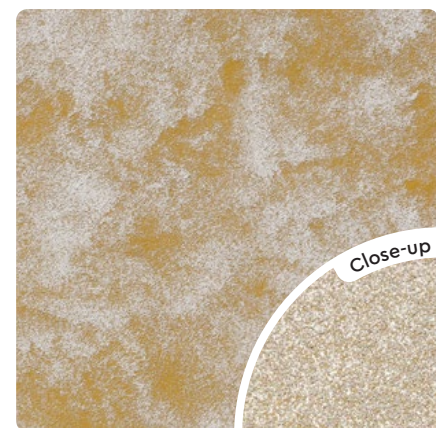
Autumn Beige | **SCH-007**



Platinum Metal | **SCH-004**



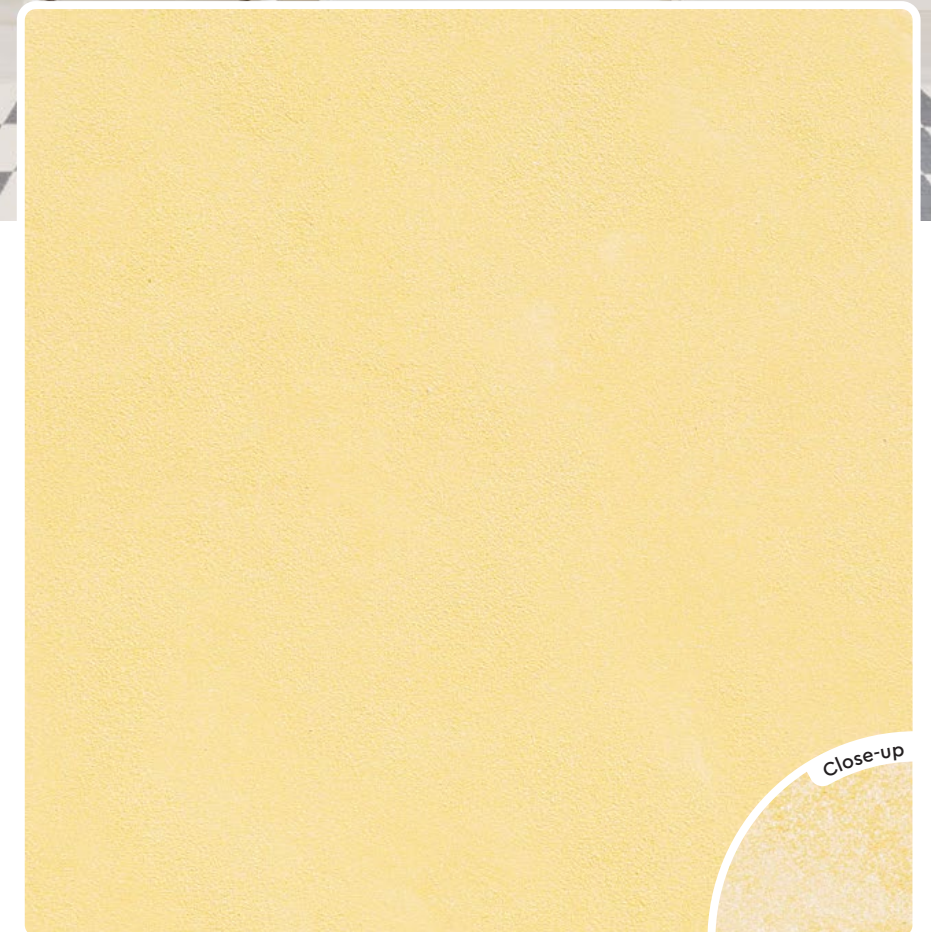
Bronze Age | **SCH-005**



Sand Castle Beige | **SCH-006**



Eggshell Beige | **SCH-008**



Desert Gold | **SCH-009**

SCH-015

POWDER
BLUE



Baby Doll Pink | **SCH-013**



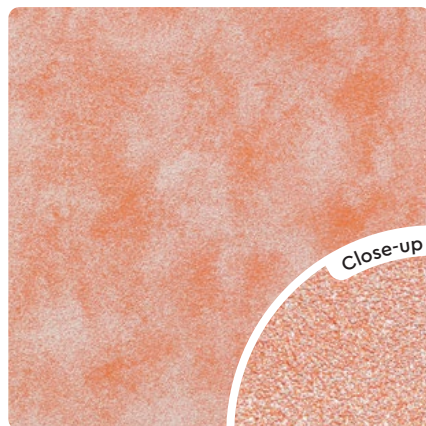
Coral Blush | **SCH-014**



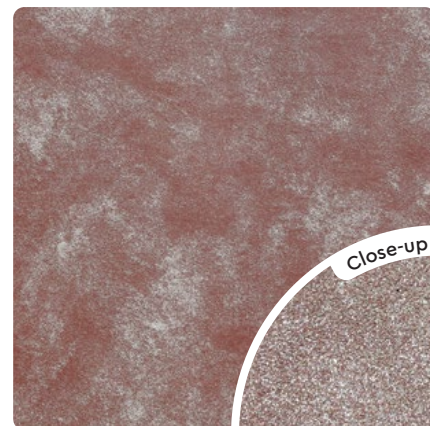
Powder Blue | **SCH-015**



Honey Yellow | **SCH-010**



Peach Blossom | **SCH-011**



Plum Sunset | **SCH-012**

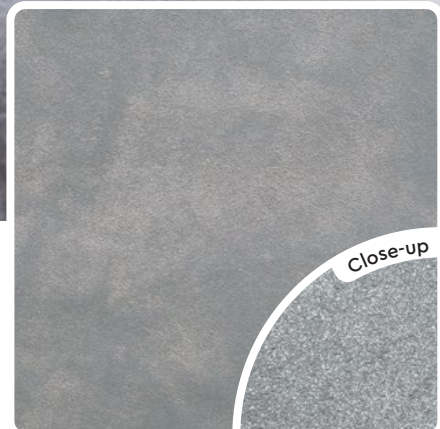


SCH-014

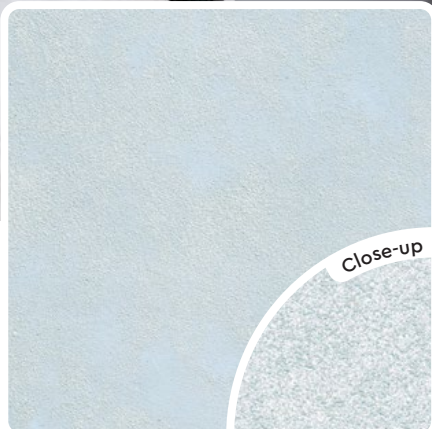
CORAL
BLUSH

SCH-019

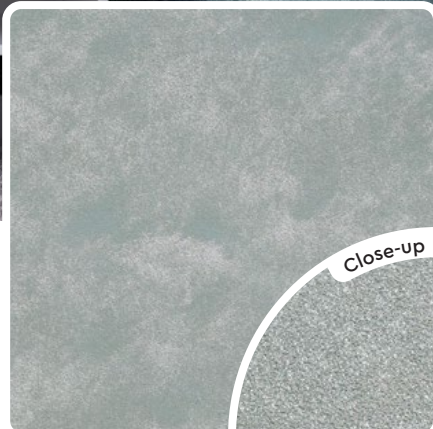
PEACOCK
BLUE



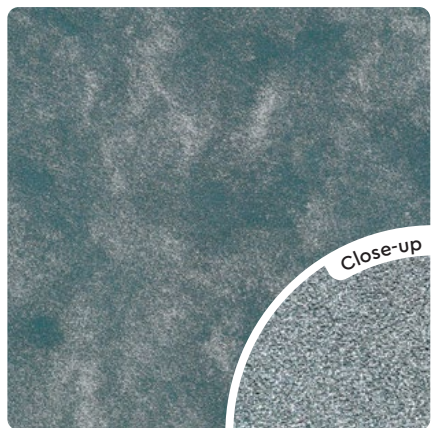
Stardust Silver | **SCH-016**



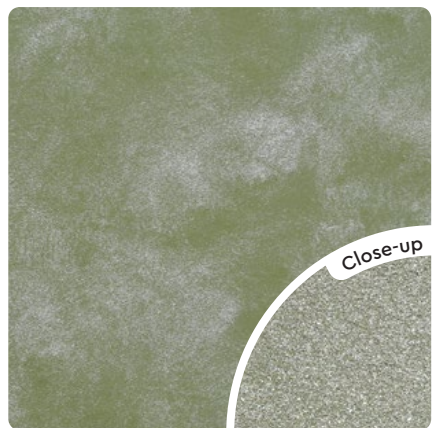
Lace Blue | **SCH-017**



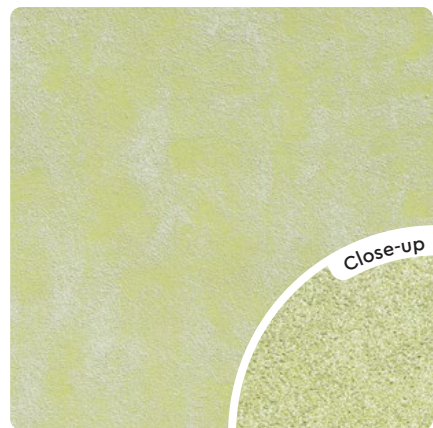
Ash Grey | **SCH-018**



Peacock Blue | **SCH-019**



Olive Tree | **SCH-020**



Tropical Green | **SCH-021**

APPLICATION TECHNIQUE

Preparation:

- Cover the edges of surface that won't be painted by masking it with tape, paper or plastic.
- Clean up the wall surface to ensure it is free from dirt and dust.



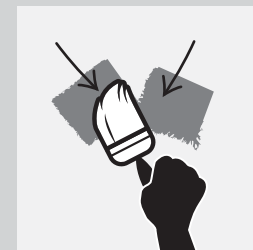
APPLICATION VIDEO



1 PRIMER

Roll 2 layers of primer on the entire surface.
Allow 30 minutes to dry between the layers.
(The primer can be diluted with maximum 5% of clean water)

Tool: Roller



2 TEXTURE COAT

Brush on texture coat in criss cross patterns. Apply 1-2 layers. Ensure the whole surface area is covered.

Tool: Brush



3 FLATTENING

Flatten the entire surface in circular motion to enhance the pattern.

Tool: Plastic Scrapper

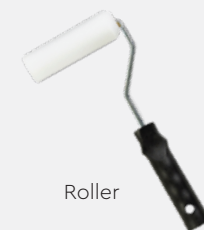


4 TOPCOAT

Evenly roll SR-Top 3 on entire surface. Allow to dry for 1 hour.

Tool: Roller

Tools:



Roller



Brush



Plastic Scrapper



PACKING DATA

1 L		Primer	Coverage (per set)	
1 L		Texture Coat	WALL	6 - 7 sqm
1 L		Topcoat (SR-Top 3)	CEILING	5 - 6 sqm