



**WIN\***  
**RM1,000!**

Join our photo contest now!  
\*T&C Apply More info: [suzuka.com.my/promotion](http://suzuka.com.my/promotion)



# WALL FINISH PROFESSIONALS

TAIWAN • MALAYSIA • THAILAND



BRICK & STONE VENEER • TEXTURE PAINT • KASTPANEL • ECES • TEXTURE COATING • PEBBLE STONE COATING



[suzuka.com.my](http://suzuka.com.my)

  [suzuka.group](https://www.facebook.com/suzuka.group) | Hotline : +6012-258 7388

\* Photos of the products shown in this catalogue may vary in color due to lighting condition & printing. We suggest you examine actual product samples before ordering.



METALLICS-E1-2204

# Strato. METALLICS

I N T E R I O R T E X T U R E P A I N T S



EDITION  
**01**



# Strato. METALLICS MERINO

"A *striking textured metallic pattern* that is *linen like* that can suit *elegant* but also *rustic designs*."



## PRODUCT FEATURES



Low VOC  
& Odor



Green Choice, Water  
Based & Eco-friendly



Applicable  
on Ceiling



Easy to  
Touch Up



Formaldehyde  
& Lead Free



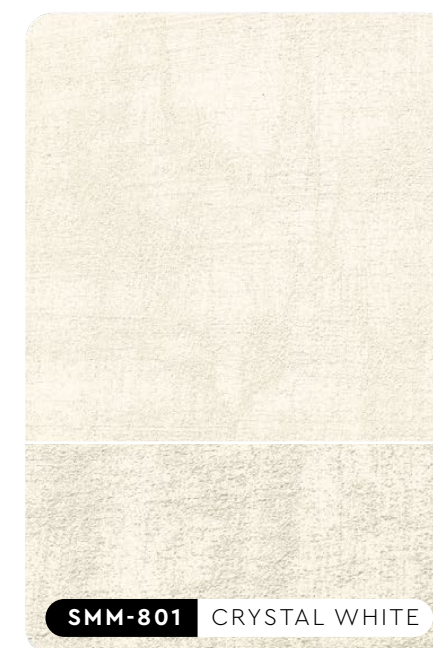
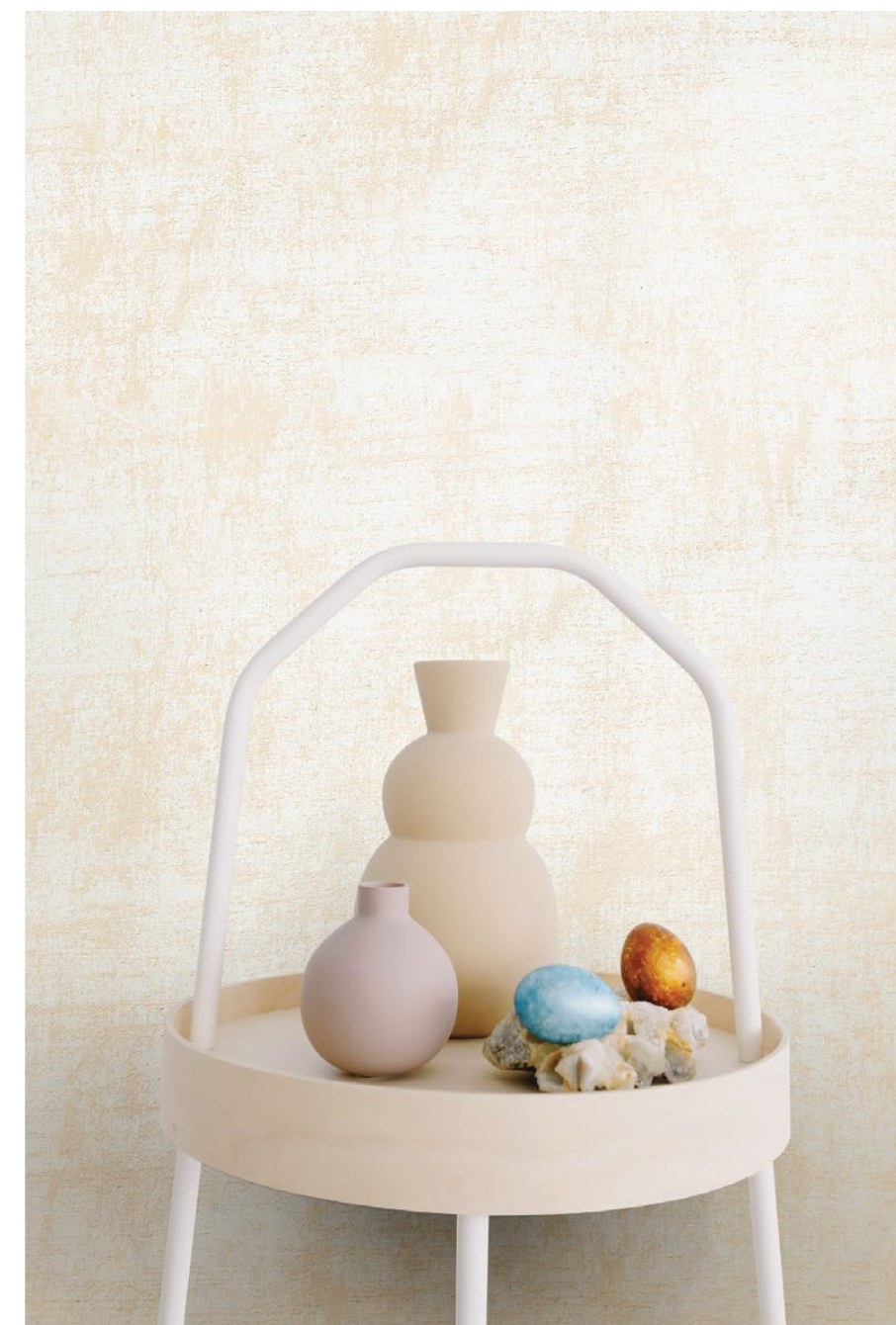
Easy Application  
& DIY Friendly



Easy  
Maintenance



Metallic  
Finish



SMM-801 CRYSTAL WHITE



SMM-802 VANILLA WHITE

All color shown are as close to the actual SUZUKA® Strato® colors as modern printing techniques permit. Color appearance/finishing may vary according to amount of coats, style of strokes applied and individual painting methods.









# APPLICATION TECHNIQUE



APPLICATION VIDEO

Preparation: - Cover the edges of surface that won't be painted by masking it with tape, paper or plastic.  
- Clean up the wall surface to ensure it is free from dirt and dust.

## STEP 1: PRIMER



Roll 2 layers of primer on the entire surface.

## STEP 2: SANDING



Sand surface with sandpaper (600 grit) to ensure a smooth surface.

## STEP 3: TEXTURE COAT

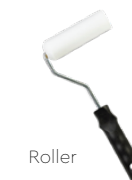


First, brush texture coat horizontally on the surface.

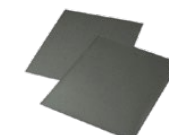


Next, brush texture coat vertically on the surface.

## TOOLS:



Roller



Sandpaper (600 grit)



Brush

# PACKING DATA

1 L	Primer
1 L	Texture Coat

Coverage (per set)

WALL	3 - 4 m <sup>2</sup> /l
CEILING	2.5 - 3.5 m <sup>2</sup> /l

