



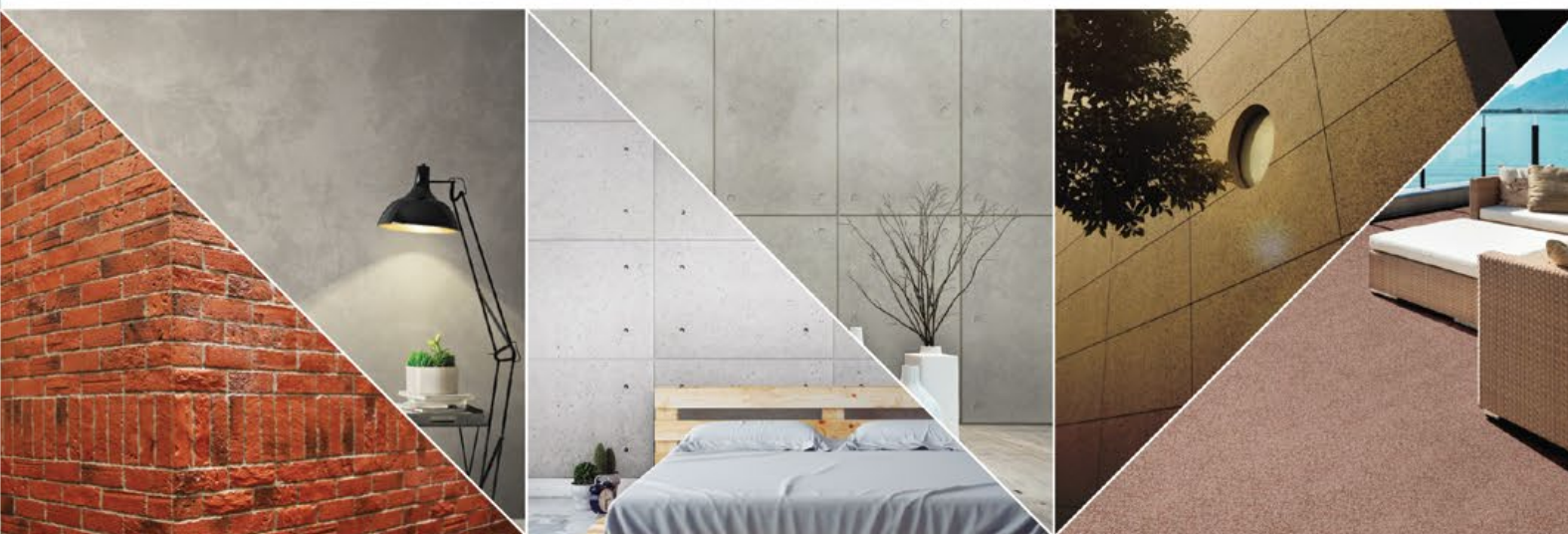
Join our photo contest now!

\*T&C Apply More info: [suzuka.com.my/promotion](http://suzuka.com.my/promotion)



# WALL FINISH PROFESSIONALS

TAIWAN • MALAYSIA • THAILAND



BRICK & STONE VENEER • TEXTURE PAINT • KASTPANEL • ECES • TEXTURE COATING • PEBBLE STONE COATING



[suzuka.com.my](http://suzuka.com.my)



[suzuka.group](https://www.suzuka.com.my)

Hotline : +6012-359 5677

\* Photos of the products shown in this catalogue may vary in color due to lighting condition & printing. We suggest you examine actual product samples before ordering.



STRATO-E5-2104



# Strato.®

INTERIOR TEXTURE PAINT COLLECTION



EDITION

05



# Strato® CEMENT TEXTURE

Create everlasting look with Strato® Cement Texture. Whether you are going for the industrial, scandinavian, contemporary or minimalistic style, the backdrop of the cement texture can complete the look.



## Features

Crack Resistant



Low VOC & Odor



Formaldehyde & Lead Free



Green Choice, Water Based & Eco-friendly



Easy, Quick Application & DIY Friendly



Anti-chalking & Efflorescence



Applicable on Ceiling



Easy Maintenance



Easy to Touch Up



Matte Finishing



• **INTERIOR USE ONLY**  
For exterior options, please see **MONOKRETE**.





Granite Grey  
| **SCT-304**



Silver Grey | **SCT-301**



Natural Grey | **SCT-302**



Shark Grey | **SCT-303**



Silver Grey  
| **SCT-301**



Granite Grey  
| **SCT-304**

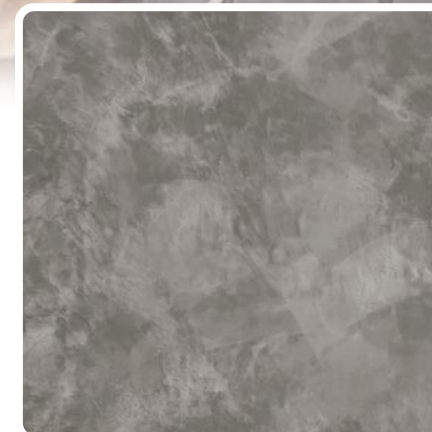


Granite Grey | **SCT-304**

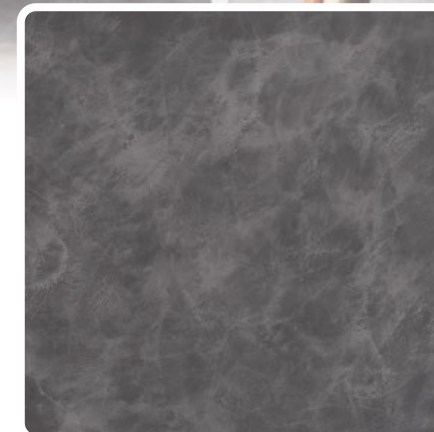


Iron Grey | **SCT-305**

Metal Grey  
| **SCT-307**



Charcoal Grey | **SCT-306**



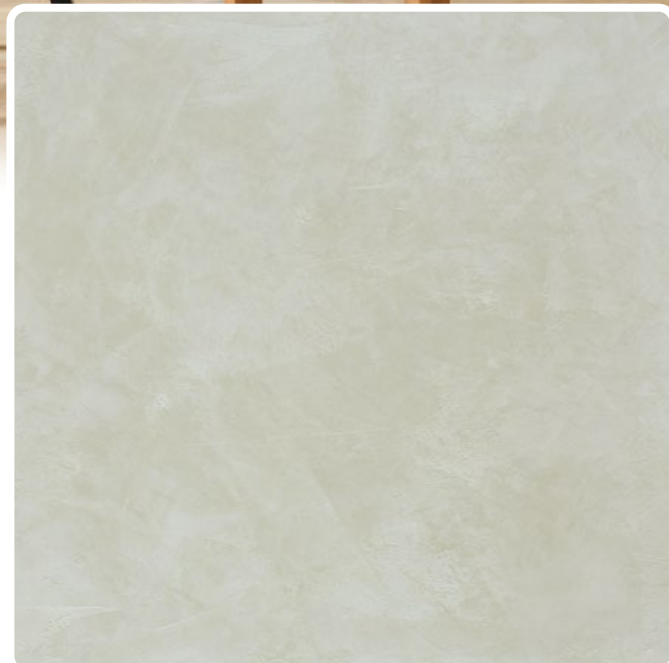
Metal Grey | **SCT-307**



Shadow Grey | **SCT-308**



□ Ashes Grey  
| **SCT-309**



Ashes Grey | **SCT-309**



Misty Grey | **SCT-310**



**PACKING DATA:**

**1L** Primer | **1L** Texture Coat | **0.5L** Topcoat (SR-Top 1)

**COVERAGE: 6-7 m<sup>2</sup>** per set

# APPLICATION TECHNIQUE



APPLICATION VIDEO



## 1 Primer

Roll 2 layers of Strato® Primer on the entire surface. Allow 30 minutes to dry between the layers.

**Tool: Roller**

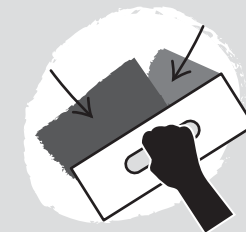
(The primer can be diluted with maximum 5% of clean water)



## 2 Sanding

Sand the entire surface in circular motion to ensure the surface is smooth.

**Tool: 600 Grit Sand Paper**



## 3 Texture Coat

Scrape Strato® Cement Texture Coat randomly to create pattern. Ensure the whole surface area is covered. Then apply second layer.

**Tool: Stainless Steel Trowel**

(use a larger trowel for a larger pattern, a smaller trowel for smaller pattern)



## 4 Sanding (OPTIONAL)

Sand the entire surface in circular motion to enhance the pattern.

**Tool: 600 Grit Sand Paper**



## 5 Topcoat

Apply SR-Top 1 on entire surface using a dry sponge in circular motions.

**IMPORTANT:** Use a clean and dry sponge or cleaning cloth to wipe the excess topcoat before it dries to avoid the sponge marks.

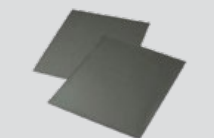
**Tool: Sponge / Cleaning Cloth**

**IMPORTANT:** Color may vary on application technique & amount of material used.



Tools:

Trowel  
or  
Scraper



Sand Paper (600 Grit)



Roller



Cleaning Cloth



Sponge